



South African  
NATIONAL PARKS

# SKUKUZA INDIGENOUS NURSERY



## VISIT THE SKUKUZA INDIGENOUS NURSERY

### THE ALL - INDIGENOUS NURSERY OFFERS:

- Over 185 indigenous plants to choose from
- Advice on suitable plants for any size garden
- Species suitable for Highveld conditions
- Seedlings and smaller plants for bonsai
- Plant identification service
- Well-know Lowveld favourites including the Impala Lily, Kudu Lily and Baobab
- Large trees in 20 litre bags
- Advice on water-wise gardening
- Great Birding and the Wetland Board Walk
- Very reasonable prices!

*For Information Contact:*

*Michele Hofmeyr*

*Tel & Fax: 013 7354312 Email: [micheleh@sanparks.org](mailto:micheleh@sanparks.org)*

# REMEMBER TO ALWAYS PLANT INDIGENOUS TREES

## The South African Trees of the Year 2009 are

### *Acacia galpinii*

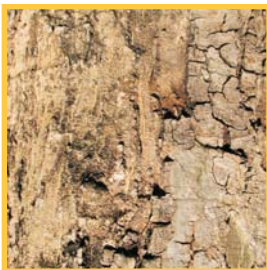
**Common names:** Monkey-thorn (Eng.), Tshikwalo (Tshivenda), Apiesdoring (Afr.), Molopa (North Sotho)



This is a large tree with dense light green foliage, making it ideal for a spacious garden or park. It is fast-growing and can reach 25-30 m in height. The Monkey-thorn is browsed by game, including giraffe, kudu and elephant. Many birds prefer nesting in this tree as it provides protection. The Monkey-thorn should not be planted too close to buildings as it has extensive roots.

### *Pterocarpus rotundifolius*

**Common names:** Round-leaved Bloodwood (Eng.), Dopperkiaan (Afr.) Muhataha (Tshivenda)



*Pterocarpus rotundifolius* is a deciduous tree that reaches a height of 10 m, but under ideal conditions it can become even bigger. It grows in open bushveld and on rocky hillsides, often forming pure stands. This tree's scented flowers attract many insects like bees and wasps. This tree is known as a beautiful garden subject.

Tree information provided by SANBI Pretoria

For more information on SA Trees of the Year visit [www.plantzafrica.com](http://www.plantzafrica.com)

#### LOCATION:

We are situated 4 km from the Skukuza Camp between the Skukuza Staff village and the Golf Club.  
We are sign posted from the main Paul Kruger-Skukuza camp road.

#### OPERATING HOURS:

*We are open 7 days a week including Public Holidays.  
We are closed on Christmas Day 25 December.*

#### MONDAY to FRIDAY WE ARE OPEN FROM 7H00 to 16H00:

During weekends and Public Holidays, the nursery is run by the Lowveld Honorary Rangers. During these times the nursery will be open from 8h00 to 16h00 and closed for lunch from 12h00 to 13h00.

#### POSTAL ADDRESS:

SANParks Scientific Services, Kruger National Park, Pvt Bag x402, Skukuza, 1350